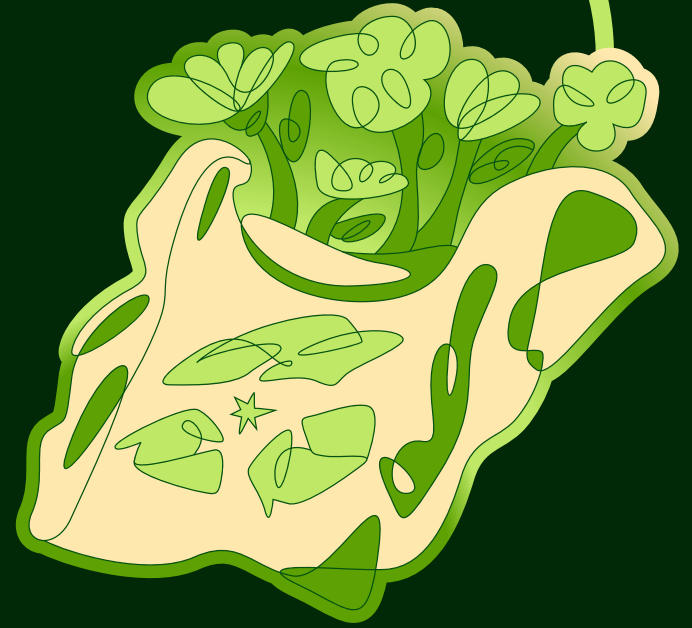


CELEBRATING  
**21**  
YEARS  
ArundelLido

# TOWARDS A GREENER FUTURE





# IT'S TIME TO TAKE ACTION!

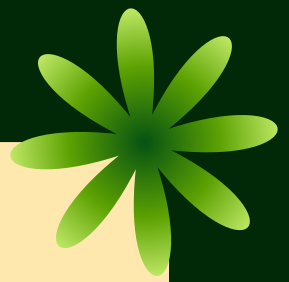
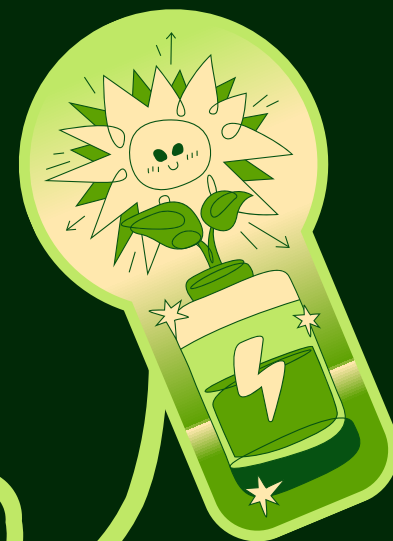
**At Arundel Lido, we are committed to enhancing our sustainability efforts. We believe that by reinforcing our environmental goals, we can contribute to positive change.**

**CAN YOU EMBRACE GREENER PRACTICES AS WELL?**






# WHAT IS ENVIRONMENTAL SUSTAINABILITY



**To be more environmentally sustainable we must take multiple actions to reduce our carbon footprint, as a result, over time our impact will have a positive effect on the surrounding environment.**

**We can reduce our carbon footprint by switching to renewable energy, managing our water consumption, conserving natural resources and implementing recycling.**

**In 2025, Arundel Lido aim to become more eco-friendly. We will focus on prioritising more sustainable practices whilst continuing to promote environmental awareness to all of our users.**



# OUR AIMS

Reduce Consumption – Ensuring our impact is highlighted in annual reports.

Raise Awareness – Promoting our green initiatives to make our efforts known and inspiring others to follow suit.

Enhance Recycling – Improving access to recycling bins on-site and transitioning away from single-use plastics.

Let's work together to reduce our carbon footprint!



## POOL COVERS

Replaced in July, it traps and insulates the heat naturally as well as stopping water evaporation. Reduces energy consumption and heating costs.

## SOLAR PANELS

Installed February 2025, renewable energy which is cleaner. This reduces our carbon footprint and allows us to be energy independent.

## RECYCLING

New recycling bins next to every general waste bin. Our contribution will divert waste away from landfill. Products made from recyclable materials (Benches.)

## LOCAL SUPPLIERS

Sourcing locally, lowers transportation cost and reduces carbon emissions.



# WHAT WE DO



# WHAT WE DO



## REUSABLE CUPS

Washable cups for our coffee mornings.  
Limits waste.

## LIGHTING

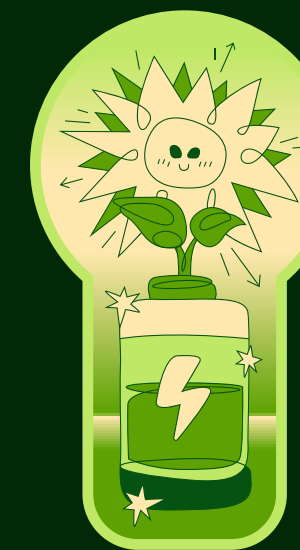
LED lighting has been fitted. These lights contain no toxic materials and are 100% recyclable. They use 80% less energy than traditional lightbulbs. Friendly reminders on all lights to be "switched off".

## ENCOURAGING BIODIVERSITY

Composting - We use our coffee grounds as natural fertilizer to enhance the soil. Spreading wood chippings to enrich the soils to encourage the growth of plants.



# HOW CAN YOU HELP



**RECYCLING!** 🌱  
Help save the planet by recycling! Please use the special bins for your recyclables. Your small effort can make a BIG difference! Let's get our green game on! 🌍♻️

**LIGHTS OUT, SAVINGS IN!**  
Turn off unused lights to save energy effortlessly—it's like being a superhero for the planet!

**REUSABLE CUPS**  
Bring your stylish cup and we'll fill it with your drink! Show off your eco-friendly side!

**WATER WARRIORS UNITE!** Let's tackle water waste! Cut down on long showers and save those taps. Together, we'll make a splash and win!